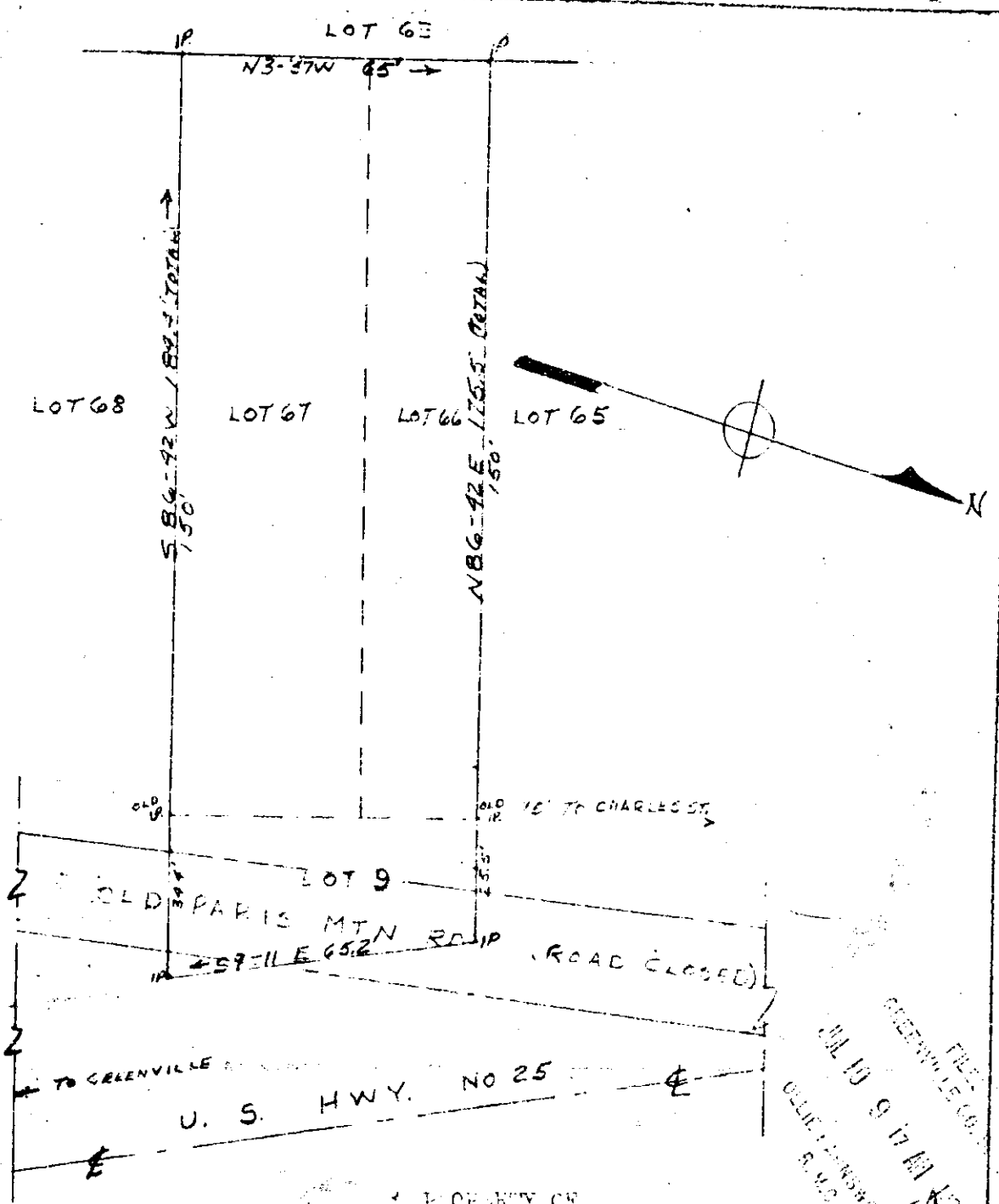


Plat Book YY-Page 143A₃

64-14



PROPERTY OF
 LEONARD MCCOBBLY
 NEAR GREENVILLE, S.C.
 SCALE 1"=30' JANUARY 1964

GREENVILLE CO. S.C.
 JUL 10 9 17 AM 1964
 JUL 10 1964

I certify that this is a portion of Lot #9 and all of Lots #66 & 67, Block 1 of Newlands surveyed by A.S. Bedell, Engineer, May 14, 1914 and that all corners and distances are as shown hereon. The distance changes are due to relocation of Hwy. No. 25 and closing of Old Paris Mountain Road. This property being the same as recorded in Plat Book "C", Page 199, Office of E.M.C., Greenville County, S.C.

1486
 JUL 10 1964

Madison H. Woodward
 Madison H. Woodward (ESC 490)

K GALWAY AND F. RUEL

YY-143

1486 FILED THIS 10th day of July 1964
 And Recorded in Vol. YY Page 143
Madison H. Woodward
 Register-Measure-County-Recorder-Office-Greenville Co. S.C.